


# LOCATION MAP



## ADVANTAGES

	CHIRAHULA MANDIR 10 MIN		MAIN MARKET 15 MIN
	JNCT COLLEGE 10 MIN		REWA RAILWAY STATION 25 MIN
	MANY COLLEGES & SCHOOLS 10 MIN		REWA AIRPORT 40 MIN
	SANJAY GANDHI HOSPITAL 15 MIN		



Add: Tala House Campus, B-5 1st floor Chakradhar City Center Infront, Rewa, Madhya Pradesh-486001

Phone No.: +91 91111 08555  
E-Mail: admin@aashiyanainfra.com

follow us on |    
Aashiyana Infra & Developers

Where dreams blend modern living with nature's embrace, a vibrant community close to the city's heart, offering your dream lifestyle amidst lush landscapes.



# YOUR CANVAS AWAITS IN THE GREEN KINGDOM OF MADHYA PRADESH

Welcome to Aashiyana Green Valley, where wide-open spaces seamlessly blend with the warmth of home. Discover your country's rich heritage, relish the charm of valley living, and here's the exciting part - you can move in right away, embracing a life that's not fleeting, but destined to become a timeless legacy. Your dream home is ready and waiting.

Imagine a world where vastness invites exploration, yet every corner feels like a familiar embrace. Aashiyana Green Valley offers you just that a place to connect with your roots, revel in valley life, and make an immediate move towards a future that holds the promise of enduring fulfillment. It's more than a residence; it's a testament to your aspirations, a place where the journey towards your dreams becomes a reality. Welcome to Aashiyana Green Valley, where each day is an opportunity to shape your lasting legacy.







## LAYOUT PLAN

COLOUR	YELLOW	GREEN	MAJENTA
DIMENSION	25*40	25*45	VARIABLE SIZES

## 3D LAYOUT PLAN

Aashiyana Green Valley is a soon-to-arrive residential hotspot in the city. It offers you the best of both worlds: a close connection to the city buzz while basking in the soothing arms of nature.



**BUILD FOR YOUR DREAM**



A playful heart is a happy one, and you deserve to keep the child in you alive, always.



## AMENITIES & FACILITIES

STEP INTO A WORLD OF ELEGANCE AND REFINEMENT

PARK



PLAY GROUND



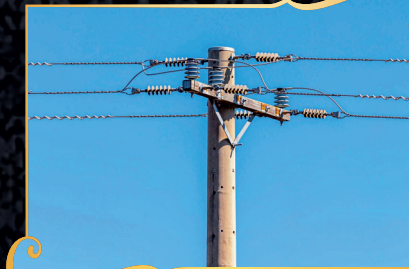
ENTRANCE GATE IN HIGHWAY



COVERED CAMPUS



ELECTRIC POLE



STREET LIGHT IN CAMPUS



DRAINAGE



30 FEET WIDE DAMAR ROAD



25 FEET WIDE DAMAR SUB ROAD

